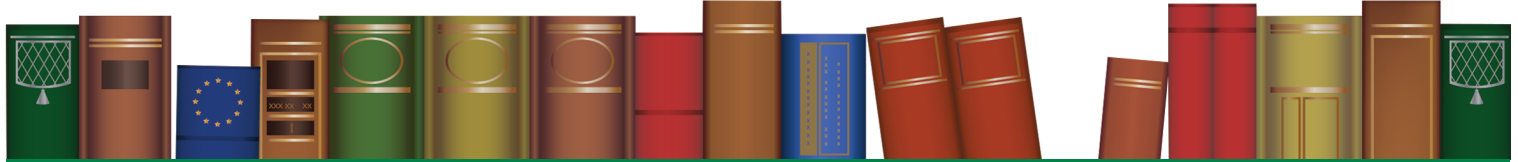




# THE Scenic Regional Library NEWSLETTER

*read, explore, grow*



issue 60 | may 2018

*A monthly publication from your local library!*

## 2018 Summer Reading Program: LIBRARIES ROCK!

**2018**

**LIBRARIES ROCK!™**

**SCENIC REGIONAL LIBRARY'S  
SUMMER READING PROGRAM!  
JUNE 1<sup>st</sup> - JULY 31<sup>st</sup>**

**ADULTS! • TEENS! • KIDS!**

### Adult Summer Reading Program Kicks Off June 1

Beginning on June 1, stop by your local branch and pick up an Adult Summer Reading Program Challenge Form. The form lists multiple challenges to complete, and you will keep this all summer to track your progress.

There are many reading challenges, such as reading a book with a musical cover or reading a book set in another country. Back again, are outside of the box challenges, including attending a program at the library or checking out a fishing pole.

Once you have completed your first three challenges, bring your form into your

local branch to receive your tote bag. You will also receive your first entry into our end-of-summer prize drawing. Throughout the summer, complete additional challenges and earn additional entries into the drawing.

Your entry into the end-of-summer prize drawings will give you a chance to win a Bluetooth/wireless speaker, \$25 gift certificate to a local restaurant, and \$25 Amazon gift card.

More information, including upcoming adult programs can be found at [www.scenicregional.org/asrc](http://www.scenicregional.org/asrc).



*Complete at least three adult summer reading challenges and be entered into a drawing for a free DOSS Touch Wireless Bluetooth V4.0 Portable Speaker with HD Sound.*





read, explore, grow

# THE Scenic Regional Library NEWSLETTER



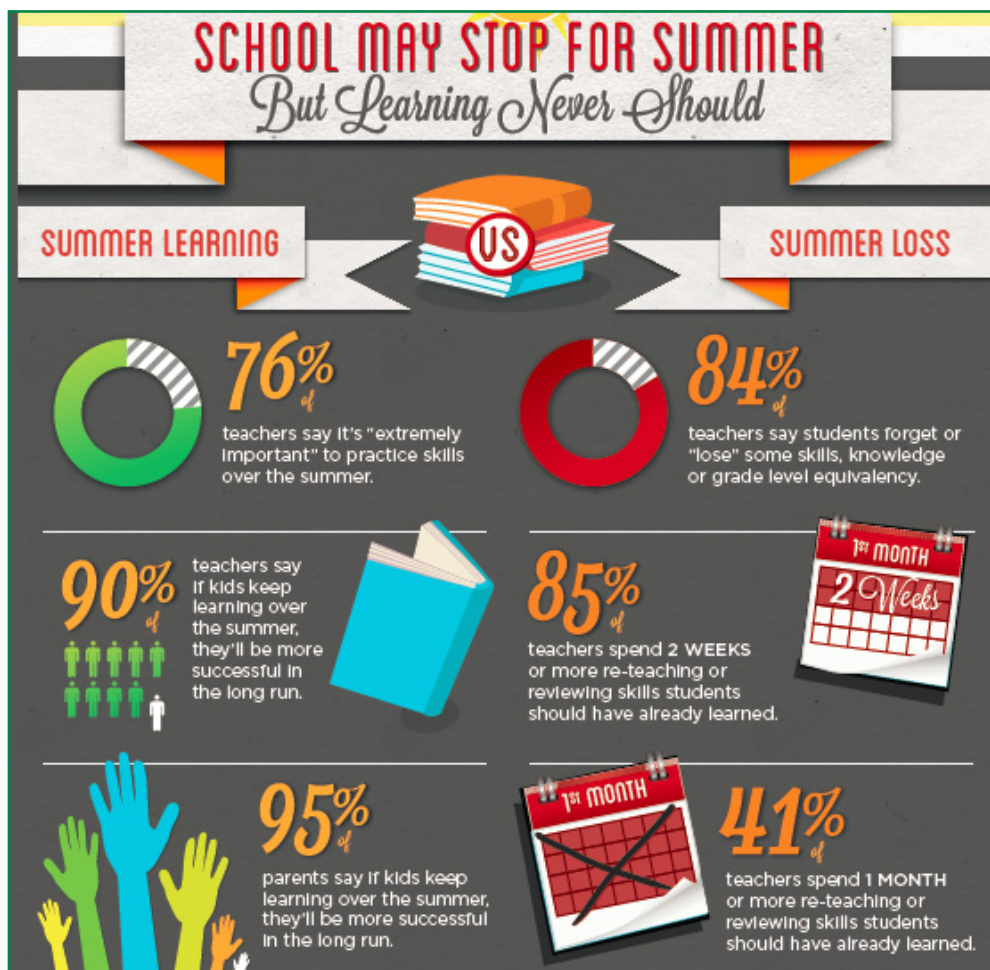
A monthly publication from your local library!

## 2018 Summer Reading Program Sign-ups Start June 1! All Ages Are Welcome to Participate. Read Some Great Books This Summer!

The library is trying something new for the Libraries Rock! Summer Reading Program this year. When you sign up you'll get a chain and a tag, then as you read you'll earn beads to build your summer reading necklace or key chain. Build something fun to wear or put on your backpack! Choose from glitter, metallic, color changing and shaped beads.

Sign up starts on June 1. If you sign up by June 10 you'll be entered into the drawing for St. Louis Cardinals baseball tickets. Read for a total of 8 hours by July 31 (that's only 7 minutes a day!) and you'll earn a free book and be entered into our end-of-summer drawings for prizes including musical instruments, puzzles, games and more.

### LET'S GET READY TO ROCK!



Staff at the Warrenton branch had a great time celebrating National Library Week, April 8-14.



Messy fun at the Pacific branch as the kids in storytime on April 12 painted their pigs with chocolate pudding!





read, explore, grow

# THE Scenic Regional Library **NEWSLETTER**



*A monthly publication from your local library!*

## Branch Manager and Youth Services Librarian Hired for New Wright City Branch

Renny McBride has been hired as branch manager of the library's new Wright City branch. Ms. McBride most recently served as the Adult Services Manager with O'Fallon (Illinois) Public Library, where she gained extensive experience with adult and teen programming. She also served as the chairperson for the Summer Reading Program during her career at Bloomington Public Library, in Bloomington, Illinois. She had previously served as the Local History Librarian with Evansville Vanderburgh Public Library. Ms. McBride started in her new position at Scenic Regional Library on April 18. She was involved in the interviews for the other Wright City branch staff toward the end of April.

Virginia Mikulencak, the part-time youth services programmer at the Pacific branch since March 17, 2017, will be transferring to the Wright City branch as their full-time youth services programmer. Ms. Mikulencak began working at the Wright City branch on April 30. Prior to the new branch opening, she will be splitting duties between the Pacific and Wright City branches, visiting schools and promoting the Summer Reading Program.



*Renny McBride,  
Wright City  
Branch Manager*



*Virginia Mikulencak,  
Wright City  
Youth Services Programmer*

### **New Wright City Branch Hours**

M, T & Th 9am-8pm  
W & F 9am-6pm  
Sat 9am-5pm

### **Wright City Branch Phone #:**

636-944-6100



## **FRIENDS OF THE LIBRARY PRIVATE TOUR**

Scenic Regional Library Director Steve Campbell will be giving a private tour of the new branches to Friends of the Library members before the new facilities open to the public. Anyone can join the Friends group for as little as \$10 a year. People who join the Friends group by May 10 will be invited to the tour.

A Friends of the Library application is available in this newsletter. The application should be mailed with a check to 304 Hawthorne Drive, Union, Missouri 63084. People can also submit an application online with a debit or credit card by visiting [www.scenicregionalfoundation.org](http://www.scenicregionalfoundation.org). The Friends of the Library groups are 501(c)3 organizations and annual membership dues are tax deductible. All proceeds from Friends' memberships are designated for their local branch.

Scenic Regional Library Director Steve Campbell gave a tour of the new Wright City branch to the Wright City R-II School District administrative staff on April 11. After the tour, the group discussed possible partnerships between the library and school district, including after-school programming, library card registration, and Summer Reading Program promotion.

(Pictured left to right) Shawn Brown, High School Principal; Patrick Wallace, West Elementary Principal; Jennifer Hecktor, Assistant Superintendent; Doug Smith, Middle School Principal; Dawn Hickman, East Elementary Principal; and David Buck, Superintendent.



### **Tentative Schedule for Friends of the Library Tours:**

**WRIGHT CITY**  
Friends of the Library Tour  
Thursday, May 17, 7:00-7:30 PM

**OWENSVILLE**  
Friends of the Library Tour  
Monday, May 21, 7:00-7:30 PM

**NEW HAVEN**  
Friends of the Library Tour  
Wednesday, May 30, 7:00-7:30 PM

SCENIC REGIONAL LIBRARY

**LIKE US! GO TO FACEBOOK.COM | VISIT US AT SCENICREGIONAL.ORG**



read, explore, grow

# THE Scenic Regional Library **NEWSLETTER**



*A monthly publication from your local library!*

Tentative Schedule for  
New Branches' Openings:

**WRIGHT CITY**  
New branch **OPENS** on  
Monday, May 21

**OWENSVILLE**  
**CLOSED** Monday, May 21,  
and Tuesday, May 22  
New branch **OPENS** on  
Wednesday, May 23

**NEW HAVEN**  
**CLOSED** Tuesday, May 29,  
and Wednesday, May 30  
New branch **OPENS** on  
Thursday, May 31



*The library staff at the Union branch were pumped for Cardinals Opening Day April 5!*



*This young man was learning how to check out his own books at the Sullivan branch during National Library Week.*

## **New Wright City, New Haven, and Owensville Branches to Open in May**

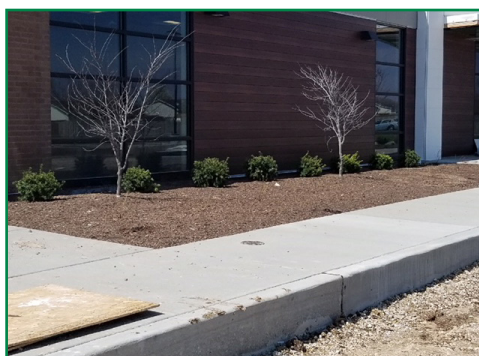
May will be a big month for Scenic Regional Library. Three new facilities will open in May, including a new branch in Wright City. The branch in Wright City is scheduled to open on Monday, May 21. The new Owensville branch is expected to open on Wednesday, May 23. The new branch in New Haven is scheduled to open on Thursday, May 31. Grand openings for each branch will be scheduled a few weeks after the buildings open to the public.

The new facility in New Haven will be 5,000 sq. ft., over triple the current size. The Owensville branch will be 6,800 sq. ft., a large increase from the community's existing 2,500 sq. ft. building. Wright City

branch will be 7,800 sq. ft. The branches will have many new features, including on-site parking, study rooms, patios with outdoor seating, and meeting rooms.

The new Sullivan branch will be complete in late-June; Pacific and St. Clair in late-July; and Warrenton in mid-August. Union's new facility is expected to be complete in March 2019.

The \$21 million building project was made possible by a voter-approved tax increase in April 2014. The project will produce six new facilities and two additions and renovations. Overall, the total square footage of the library system's branches will double in size.



*Landscaping in front of the Wright City branch.*



*Flooring in the children's area leading to the children's patio at the Wright City branch.*

*For more photos of library's new branches under construction visit:*

[scenicregional.org/constructionphotos](http://scenicregional.org/constructionphotos)



**"Like" the new Wright City Branch Facebook page! Keep up to date on programs, events, and other news about the library's newest branch.**

[www.facebook.com/WrightCityBranch](http://www.facebook.com/WrightCityBranch)

SCENIC REGIONAL LIBRARY

**LIKE US! GO TO FACEBOOK.COM | VISIT US AT SCENICREGIONAL.ORG**





read, explore, grow

# THE Scenic Regional Library **NEWSLETTER**



*A monthly publication from your local library!*

## Library Interviewed Monthly on Local Radio Stations

The library has regularly-scheduled interviews on all three local radio stations each month to discuss upcoming programs and events; building project updates; new and existing library services; and other information and happenings. Various staff from the branches and administration appears on the programs, which are each approximately 20-30 minutes in length.

On the first Wednesday of each month the library staff appears on the Diane Jones Show on KLPW 1120 AM in Union at 8:35 AM. On the third Thursday of each month the library staff is interviewed by John Rice on KTUI 1560 AM in Sullivan at 9:10 AM. On the fourth Thursday of each month the library staff appears on Livewire with Mike Thomas on KWRE 730 AM in Warrenton at 9:30 AM.



*Sullivan Branch manager Lori Jane Perdew and Assistant Director Megan Maurer being interviewed by John Rice on KTUI.*

**KLPW 1120 AM in Union: First Wednesdays, 8:35AM**

**KTUI 1560 AM in Sullivan: Third Thursdays, 9:10AM**

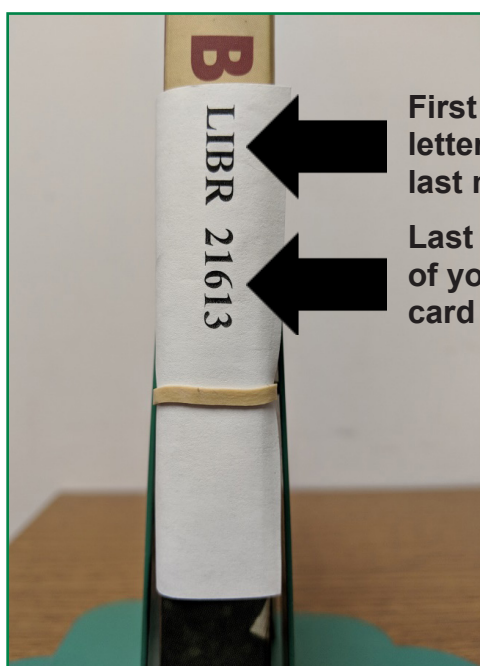
**KWRE 730 AM in Warrenton: Fourth Thursdays, 9:30AM**

## Library Changing the Way Patrons Pick Up Requests

In the library's new buildings, reserved books and movies will be on shelves in the public area rather than behind the service desk. Patrons will pull their items off of the public hold shelf and take them to the service desk to be checked out.

In order to protect patron privacy, the wrapper on reserved items will only display a code consisting of the first four letters of the patron's last name and the last five numbers of the patron's library card barcode number. Patrons should bring their library card with them when they come to the library so that they can find and check out their requested items.

The change is in preparation of the library adding self-check systems at some branches this year. The systems will give patrons the option to check out their materials themselves. With self-check machines, patrons will be able to pick up and check out their own holds and other materials.



**First four letters of your last name**

**Last five digits of your library card number**



*Patrons at the St. Clair branch had a great time decorating reusable tote bags on April 14.*



*Girl Scouts are teaching life skills at the Hermann branch this month.*

SCENIC REGIONAL LIBRARY

**LIKE US! GO TO [FACEBOOK.COM](https://www.facebook.com/scenicregional) | VISIT US AT [SCENICREGIONAL.ORG](https://www.scenicregional.org)**



*A monthly publication from your local library!*



*Dean Smith spoke to a great crowd about hiking the Appalachian Trail at The White Chapel in Sullivan.*

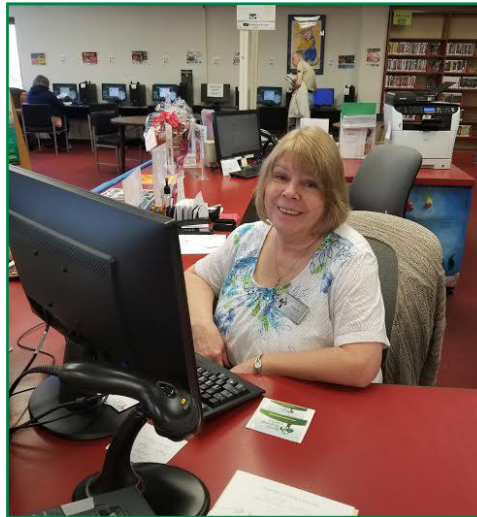


*Kids in Marthasville enjoyed a Dr. Seuss party during the bookmobile stop at Duck's Bar and Grill on March 27.*



*Friends of the Library New Haven branch recently wrapped up the CANstruction benefit for the New Haven Food Pantry. A big "Thank You" to the Friends members who organized this benefit and to everyone who donated in support of the local food pantry.*

## Staff Spotlight: Gwen



Change is in the air at the Sullivan branch of Scenic Regional Library with a new, 10,000 square foot building set to open this summer and Gwen, the branch's adult programmer, retiring April 27, after serving the Sullivan community for almost a decade.

Gwen's tenure at the Sullivan branch began in June of 2008 when it was the Sullivan Public Library. She was hired as a full time employee with duties including suggesting books for purchase, cataloging, circulation duties, and helping patrons. When Sullivan Public Library became part of Scenic Regional Library in October of 2015, Gwen took on a new role as adult programmer.

Gwen's love of libraries began at a young age when her grandfather set up a library for his grandchildren in one of his old barns with books that he bought from a school in his hometown. "I used to play librarian and check books in and out to my cousins," Gwen said. "I have always been an avid reader and a people person. Most of my previous jobs were in customer service. This just seemed like the logical position for me."

Gwen said she will miss her job at the library and the connections she has made with the people there. "It has been a pleasure to watch so many families grow and see toddlers go to high school and high schoolers go to college," Gwen said. "It has also been sad to see some pass on. Hopefully, I have touched a few of their hearts as they touched mine. Thank you for a great run."

*Staff Spotlight is written each month by St. Clair branch manager Kara Bell.*



*Kids from the Warrenton branch had a great time during storytime at the firehouse on April 24. Here they were learning to not be afraid of the firefighters.*



*Leslie Mahin from Hillermann's Nursery spoke at the Pacific branch on April 12 about what to plant to attract bees and butterflies.*





read, explore, grow

# THE Scenic Regional Library NEWSLETTER



A monthly publication from your local library!

## New Online Catalog Feature Makes Searching for Children's Award Books Easier

A recent upgrade to Missouri Evergreen makes it much easier for patrons to search for children's award books in the library's online catalog. The new feature is called a "digital bookplate". The following children's books which can now be searched in the online catalog using the digital bookplate feature:

- Missouri Building Block Award
- Show Me Readers Award
- Newbery Award
- Mark Twain Readers Award
- Caldecott Award
- Truman Readers Award
- Printz Award
- Gateway Readers Award
- Stories Matter

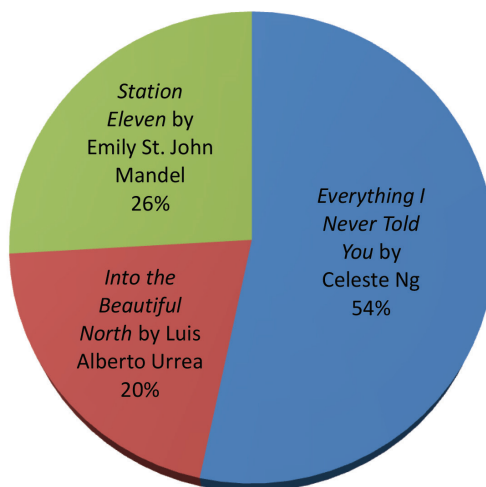
When searching the online catalog, enter the name of the award into the search box and select "Digital Bookplate" under the drop down menu for "Type" of item. Visit [www.scenicregional.org/digitalbookplate](http://www.scenicregional.org/digitalbookplate) for a visual step-by-step guide showing how to search for award books in the library's online catalog.

## Everything I Never Told You Wins Big Read Vote

During National Library Week, April 9-14, Scenic Regional Library, Washington Library, East Central College, and other partner-organizations held a vote to select the book for a Big Read grant application in 2019. 270 people participated in the vote.

Celeste Ng's *Everything I Never Told You* won in a landslide with 144 votes (54%). *Station Eleven*, by Emily St. John Mandel, was second with 70 votes (26), followed by *Into the Beautiful North*, by Luis Alberto Urrea, with 56 votes (20%).

Now that the book has been selected, the Big Read planning committee will begin mapping out the event in more detail, including programming ideas. The NEA Big Read grant application is due in January 2019.



Author  
Celeste Ng



Melissa was shakin' her groove thing with the kids in storytime at the St. Clair branch on April 5.



Kids in storytime at the Hermann branch showing off their bear claws on April 12.



Kids at the Owensville branch made grow-bugs to celebrate Spring on April 14.



read, explore, grow

# THE Scenic Regional Library **NEWSLETTER**



## may 2018 upcoming events

### HERMANN BRANCH

---

Please register for adult programs.

#### ADULT PROGRAMS

##### **DIY: Framed Flowers** (Limit 12)

*Thursday, May 24 at 6:00 pm*

Create a pressed flower craft.

Bring a pair of tweezers.

##### **Coffee & Cross Stitch**

*Friday, May 25 at 10:00 am*

All levels of cross stitch experience are welcome! Materials will be provided.

##### **Book Club**

*Every 3rd Wednesday*

*from 4:30 pm - 6:00 pm*

#### KID & TEEN PROGRAMS

##### **S.T.E.A.M. Time Storytime: Gravity**

*Thursday, May 3 at 10:00 am*

##### **Project T.i.L.T.: Post-It Note Art**

*Tuesday, May 8 at 3:30 pm*

##### **Kids Club: Bookmarks**

*Thursday, May 10 at 3:30 pm*

##### **Story Night**

*Thursday, May 31 at 7:00 pm*

Join us for "Little Reader's Theater". Perform 1 or 2-minute scripts, sing, tell a joke, or dance on our "stage".

Please register for family programs.

#### FAMILY PROGRAMS

##### **Library Star Party at the Branch**

*Tuesday, May 8 at 7:30 pm*

Join representatives from the Eastern Missouri Dark Sky Observers for telescope instruction and star-gazing fun!

##### **May The Fourth Be With You**

*May 4-5 from 9:00 am - Close*

Join us for the WHOLE in story-line-order epic battles, secret family ties, love stories, and fuzzy ewoks!

##### **Family Movie Night at the Hermann Show Boat Theater**

*Friday, May 11 at 7:00 pm*

"My Little Pony: The Movie". Sponsored by Meyer Chiropractic & Acupuncture.

### NEW HAVEN BRANCH

---

Please register for adult programs.

#### ADULT PROGRAMS

##### **Missouri's Strategic Importance in The Civil War, "The War Between the States"**

*Thursday, May 10 at 6:00pm*

Old New Haven School, 810 Maupin Ave.

Joseph W. "Whit" McCoskrie, a former soldier, will highlight Missouri's strategic importance in the Trans-Mississippi region, including coverage of Price's Raid and its devastating impact on Franklin County in 1864. Books will be available for purchase.

##### **Book Club at the Branch**

*Wednesday, May 23 at 5:00pm*

Join us for a discussion of *An Invisible Thread: The True Story of an 11-Year Old Panhandler, a Busy Sales Executive, and an Unlikely Meeting with Destiny* by Laura Schroff and Alex Tresniowski.

#### KID & TEEN PROGRAMS

##### **Pre-School Storytime**

*Each Tuesday at 10:00am*

Up to Kindergarten age.

##### **Storytime at Miller's Landing Day**

*Saturday, May 5 at 1:30 pm*

Walt Theatre in Downtown New Haven.

Join us as the town of New Haven celebrates its origins and history.

The library will be conducting a special storytime at this event. Children will hear stories about the Lewis and Clark expedition as well as make a pioneer era game. Storytime is at 1:30pm. A fun day for all ages!

### OWENSVILLE BRANCH

---

Please register for adult programs.

#### ADULT PROGRAMS

##### **Movie Night at the Library**

*Friday, May 4 at 6:30 pm*

(Please note this program is 30 minutes earlier than usual!) We will be showing "The Glass Castle" with Woody Harrelson.

##### **Remembering Mamma**

*Thursday, May 10 at 7:00 pm*

##### **Tea Time Travelers' Book Club**

*Wednesday, May 16 at 6:30 pm*

We will discuss *The Heart Mender* by Andy Andrews.

##### **Acrylic Painting with Tammy Curtis**

*Thursday, May 31 at 7:00 pm*

Program held at First State Community Bank.

#### KID & TEEN PROGRAMS

##### **Lil' OWLs Storytime**

*Every Wednesday at 10:30 am*

Stories, songs and crafts.

##### **May the Fourth Be With You**

*Friday, May 4 at 6:00 pm*

Program held at First State Community Bank.

##### **Read, Build, & Play:**

##### **Magical May Flowers**

*Saturday, May 12 at 11:00 am*

Program held at First State Community Bank.

##### **Let's Get Looney Tunes**

*Wednesday, May 30 at 16:00 pm*





read, explore, grow

# THE Scenic Regional Library **NEWSLETTER**



**ALL BRANCHES CLOSED MONDAY, MAY 28 FOR MEMORIAL DAY**

## **PACIFIC** BRANCH

Please register for adult programs.

### **ADULT PROGRAMS**

#### **Play Mahjong**

*Every Wednesday at 10:00 am*

#### **Celebrate Cinco de Mayo**

*Wednesday, May 2 from 6:00 pm - 8:00 pm*

Celebrate Mexican-style with games and food!

#### **Meet the Author: Dan Brannan, Author of Boy Giant Robert Wadlow**

*Tuesday, May 8 at 6:00 pm (Limit 40)*

The story of the world's tallest man.

#### **Friends of the Library Meeting**

*Wednesday, May 9 at 6:00 pm*

#### **National Pun Day**

*Tuesday, May 15 at 6:00 pm (Limit 20)*

Celebrate by decorating flower pots with plant puns!

#### **Book Club**

*Tuesday, May 22 at 6:00 pm*

We will be discussing *Still Life* by Louise Penny.

## **KID & TEEN PROGRAMS**

### **Storytime (Toddlers-Kindergarten)**

*Every Thursday at 10:00 am*

#### **Fire Fighter Storytime**

*Thursday, May 3 at 10:00 am*

Come join Pacific Fire Department.

#### **Kid's Club (Grades 1-5)**

##### **1st & 3rd Saturday**

*May 5: 11:00am - 12:00 pm*

Cinco de Mayo fun!

*May 19: 11:00am - 12:00 pm*

Read, Build & Play with Legos!

Please register for family programs.

### **FAMILY PROGRAMS**

#### **Summer Reading Program**

##### **Kick-Off Party**

*Tuesday, May 31 from 5:30 pm - 7:00 pm*

Pacific Park, Rulon Pavillion. Enjoy with music by Steve Leslie, fun family activities, and more.

## **ST. CLAIR** BRANCH

Please register for adult programs.

### **ADULT PROGRAMS**

#### **Coffee and Crayons**

*Tuesday, May 1 at 6:00 pm*

Come relax with us as we color our cares away and enjoy some delicious snacks and beverages. All materials will be provided! 18+.

#### **Book Bingo**

*Thursday, May 17 at 6:00 pm*

Join us for a fun-filled evening of Bingo! All winners will receive book prizes. 18+.

#### **Adult Book Club**

*Thursday, April 24 at 2:00 pm*

We'll discuss *The Shack* by William Paul Young.

## **KID & TEEN PROGRAMS**

### **Homeschool Group**

*1st and 3rd Wednesday each month*

*May 2 at 11:00 am: Weaving*

*May 16 at 11:00 am: Foil Glue Gun Art*

#### **Pre-School Storytime**

*Every Thursday at 11:00 am*

#### **Read, Build & Play**

*Every Saturday at 11:00 am*

#### **No Sew Heart Pillows (Teens)**

*Saturday, May 26 at 2:30 pm*

You will leave with a small heart-shaped pillow of your very own.

#### **Foil Glue Gun Art**

*Thursday, May 31 at 5:00 pm*

We will use crafty materials to make a cool piece of art.

## **SULLIVAN** BRANCH

Please register for adult programs.

### **ADULT PROGRAMS**

#### **Take-A-Ticket**

*Tuesday, May 8 from 2:00 pm - 6:00 pm*

Stacy Emerson, SRL's Trainer and Adult Education Instructor will assist patrons with specific computer technology questions in 30-minute sessions. You will need to register for your one-on-one training.

#### **"As the Page Turns" Book Club**

*Thursday, May 10 at 6:00 pm*

We will discuss the book *The Forever Bridge* by T. Greenwood.

## **KID & TEEN PROGRAMS**

### **Storytime (preschool-age children)**

*Every Tuesday at 10:00 am*

#### **Kids Club Kindness Bookmarks**

*Monday, May 21 at 3:30 pm*

Spread kindness by making a bookmark to place in a book of your choice to be checked out by someone else!



*Kids in storytime at the Union branch made scary faces with Johnnalee as they read books by Jan Thomas on April 11.*



read, explore, grow

# THE Scenic Regional Library **NEWSLETTER**



may 2018 upcoming events

## UNION BRANCH

Please register for adult programs.

### ADULT PROGRAMS

**Best Gardening Practices for a Sustainable Garden with Besty Alexander**

*Thursday, May 10 at 6:00 pm*

### Ground Breaking Ceremony

*Saturday, May 12 at 10:00 am*  
251 Union Plaza Drive (Next to Pasta House).

### Hooked on Books Book Club

*Thursday, May 17 at 6:00 pm*  
We will be discussing *The Boyhood Memoirs of A.E. Hotchner: King of the Hill and Looking for Miracles* by A.E. Hotchner.

### Forest Park Owls: Hunting and Feeding with Mark Glenshaw

*Tuesday, May 22 at 6:00 pm*

### Book Bingo (Take home a free book!)

*Thursday, May 24 at 11:00 am*

Please register for computer programs.

### COMPUTER PROGRAMS

#### Basic Internet Skills (Limit 6)

*Thursday, May 3 from 6:00 pm - 7:00 pm*

#### Creating Charts in MS Excel (Limit 6)

*Wednesday, May 9 from 2:00 pm - 3:00 pm*

#### Inserting Pictures and Clip Art into MS Word Documents (Limit 6 people)

*Friday, May 18 from 10:00 am - 11:00 am*

#### Introduction to MS PowerPoint (Limit 6)

*Tuesday, May 22 from 9:30 am - 11:30 am*

## KID & TEEN PROGRAMS

### Preschool Storytime

*Wednesdays & Saturdays at 10:00 am*

### Storytime at the Ground Breaking

*Saturday, May 12 at 10:30 am*  
251 Union Plaza Drive

### Bicycle Scavenger Hunt

*Saturday, May 19 from 1:00 pm - 2:00 pm*  
Can you find all of the bike related items hidden around the branch?

## WARRENTON BRANCH

Please register for adult programs.

### ADULT PROGRAMS

#### Tacos, Tortillas & Trivia (72 Limit)

*Monday, May 1 at 6:00 pm*  
OFFSITE at La Mocha Mexican Restaurant, 1000 Warrenton Outlet Center.

#### Mom's Night Out

*Tuesday, May 8 from 5:30 pm - 7:30 pm*  
Spa Night! OFFSITE at First State Community Bank, 1022 State Hwy 47.

#### The Kathy & Kim Variety Hour!

**Part 3: Chocolate** (40 Limit)  
*Tuesday, May 15 at 6:00 pm*  
Games & fun! OFFSITE at First State Community Bank, 1022 State Hwy. 47.

#### The Impossible

*Tuesday, May 22 at 6:00 pm*  
Author Joyce Smith will be discussing her son's miraculous story of falling through the ice, dying, and coming back to life.  
OFFSITE at Warrenton Community Church, 33355 North State Hwy. 47.

#### Book Club

*Wednesday, May 23 at 2:00 pm*  
We will be discussing *The Art of Racing in the Rain* by Garth Stein.

## KID & TEEN PROGRAMS

### Storytime (Preschool-Kindergarten)

*Mondays at 6:30 pm, Tuesdays at 10:00 am*  
Tuesday morning storytimes will be held at the Warren County Health Department basement, 101 Mockingbird Lane.

**EXCEPT May 8 will be at the branch!**  
**NO STORYTIME: Tuesday, May 28.**

### Read, Build, & Play (Grades K-5)

*Monday, May 7 from 3:15 pm - 4:15 pm*  
End of school year celebration!  
Minute-to-Win-It games, snacks & drinks!

### Girl Scout Robotics STEM Informational Meeting

*Thursday, May 10 at 6:00 pm*  
Learn more about creating your own Girl Scout Robotics Team!

## WRIGHT CITY BRANCH

Welcome to Scenic Regional Library - Wright City Branch

We are a Missouri Evergreen Library!

•We are the latest branch of Scenic Regional Library as of May 14!

•Sign up for the monthly newsletter for information about upcoming programs and events at [scenicregional.org/newsletter](http://scenicregional.org/newsletter)

•Join the Wright City branch's Friends of the Library. Membership dues and contributions are tax deductible and designated solely for use by your branch's Friends group. For more information about the Friends and an application visit [scenicregional.org/friends-of-the-library](http://scenicregional.org/friends-of-the-library)

•Books-by-Mail is available for certified homebound patrons. Call 636-583-0652, ext. 114 or visit [www.scenicregional.org/booksbymail](http://www.scenicregional.org/booksbymail)

•Storytime  
Every Wednesday at 10:00 am  
For preschool-age children.

•Libraries Rock! Summer Reading Program for All Ages!  
June 1 - July 31  
Check our website for more details.





## Purchase a "Book" for the Donor Wall in Your Community's New Library

The Scenic Regional Library Foundation and Friends of the Library groups are selling donor wall "books", which will be placed in the entrance hallway of each new library building.

You can have your name, your family's name, or your business's name become a permanent part of the new library in your community. Donor wall "books" can also serve as a beautiful and long-lasting memorial for a loved one.

The cost of a donor wall "book" is based on the size of the book:

- 8" x 1½" book – \$100
- 10" x 2" book – \$200
- 9" x 3" book – \$300

Visit [www.scenicregionalfoundation.org](http://www.scenicregionalfoundation.org) or complete this form to place your order. The Foundation accepts debit and credit cards (online), checks, and cash (only for forms brought to the library) for donor wall "book" purchases.



Proceeds from the sale of the donor wall books are designated for the local Friends of the Library group and used to assist with the purchase of furnishings and equipment in their new building.

### **Purchases are tax deductible.**

Donor wall "books" can be purchased throughout the construction project and will be unveiled at the grand opening of each new branch library.



## Scenic Regional Library Foundation Donor Wall "Book" Order Form

FIRST NAME		DATE	
MIDDLE INITIAL	LAST NAME		
STREET ADDRESS			
CITY			
STATE	ZIP CODE		
PHONE NUMBER			
EMAIL ADDRESS			
NAME OF INDIVIDUAL, FAMILY, BUSINESS OR ORGANIZATION TO APPEAR ON BOOK			
BRANCH (Please select one)		SIZE OF BOOK	
<input type="checkbox"/> Hermann Branch		<input type="checkbox"/> 8" X 1-1/2" - \$100	
<input type="checkbox"/> New Haven Branch		<input type="checkbox"/> 10" X 2" - \$200	
<input type="checkbox"/> Owensville Branch		<input type="checkbox"/> 9" X 3" - \$300	
<input type="checkbox"/> Pacific Branch			
<input type="checkbox"/> St. Clair Branch			
<input type="checkbox"/> Sullivan Branch			
<input type="checkbox"/> Union Branch			
<input type="checkbox"/> Warrenton Branch			
<input type="checkbox"/> Wright City Branch			
OFFICE USE ONLY			
Date received: _____			
Amount received: _____			
<input type="checkbox"/> Check # _____			
<input type="checkbox"/> Cash			

Mail this form (or drop it off at your local branch) with your personal check or money order to:

Friends of the Library  
304 Hawthorne Drive  
Union, MO 63084



## SCENIC REGIONAL LIBRARY FRIENDS OF THE LIBRARY MEMBERSHIP APPLICATION

April 1, 2018 – March 31, 2019 Membership Year

All information submitted is considered confidential and will never be given or sold to any other individual, company, or organization.

FIRST NAME		DATE	
MIDDLE INITIAL	LAST NAME		
STREET ADDRESS			
CITY			
STATE		ZIP CODE	
PHONE NUMBER			
PHONE NUMBER			
EMAIL ADDRESS			
<b>BRANCH AFFILIATION (Please select one)</b>		<b>LEVEL OF MEMBERSHIP</b>	
Friends of the Hermann Branch <input type="checkbox"/>		Bronze – \$10 <input type="checkbox"/>	
Friends of the New Haven Branch <input type="checkbox"/>		Silver – \$25 <input type="checkbox"/>	
Friends of the Owensville Branch <input type="checkbox"/>		Ruby – \$50 <input type="checkbox"/>	
Friends of the Pacific Branch <input type="checkbox"/>		Gold – \$100 <input type="checkbox"/>	
Friends of the St. Clair Branch <input type="checkbox"/>		Platinum – \$250 <input type="checkbox"/>	
Friends of the Sullivan Branch <input type="checkbox"/>		Diamond* – \$500 <input type="checkbox"/>	
Friends of the Union Branch <input type="checkbox"/>			
Friends of the Warrenton Branch <input type="checkbox"/>			
Friends of the Wright City Branch <input type="checkbox"/>			
		<b>*Lifetime Membership</b>	
<b>WOULD YOU LIKE TO HELP? (Select all which apply)</b>		<b>Office Use Only</b>	
Volunteer at the Fall Book Sale <input type="checkbox"/>		<input type="checkbox"/> New Application	
Volunteer at the Spring Book Sale <input type="checkbox"/>		<input type="checkbox"/> Renewal	
Volunteer at other events <input type="checkbox"/>		Date Received:	
Volunteer at my local branch <input type="checkbox"/>		<input type="checkbox"/> Check <input type="checkbox"/> Cash	
Serve on the local Friends of the Library's <input type="checkbox"/>		Amount Received:	
Governing and Planning Committee <input type="checkbox"/>			

Mail this form (or drop it off at your local branch) with your personal check or money order to:  
Friends of the Library, 304 Hawthorne Dr., Union, MO 63084  
*Membership dues and contributions are tax deductible.*