

be retained as open space, and the Red Cedar Inn property.

A major concern for any

AD DEADLINES

Wednesday Missourian: Real Estate Ads - 2 p.m. Thursday; Display Ads - 2 p.m. Friday; Auction, Farm, Garage Sales, Classified Line and Classified Display Ads 4 p.m. Monday; Preprinted Supplements 8 a.m. Wednesday; Ads with proof required - 2 p.m. Thursday; Legals - 4 p.m. Monday.

Weekend Missourian: All Ads, Classified Line, Classified Display, Garage Sales, Real Estate - 4 p.m. Thursday. Special Sections - 10 a.m. Tuesday; Preprinted Supplements - 8 a.m. Wednesday; Legals - 4 p.m. Thursday.

Pacific Missourian

THE WASHINGTON MISSOURIAN
(USPS 667-820)

636-239-7701

Volume 159 No. 35

Published twice weekly on Wednesdays and weekends with editions in Washington, Union, St. Clair, Pacific

by the
Missourian Media Group
at

14 West Main Street,
Washington, MO 63090.

Email: washnews@emissourian.com

Pauline Masson
Editor

paulinemasson@att.net

314-805-9800

14 Main St.

Washington, MO 63090

Periodicals postage paid at Washington, MO 63090.

POSTMASTER: Send address changes to The Washington Missourian, P.O. Box 336, Washington, MO 63090.

To Subscribe

Call 636-239-7701 or 1-888-239-7701

Subscription Rates

For residents of Franklin County:

3 Months.....\$12.50*
6 Months.....\$25.00*
One Year.....\$50.00*

Other areas in Missouri:

3 Months.....\$21.25*
6 Months.....\$42.50*
One Year.....\$85.00*

Outside of Missouri:

3 Months.....\$26.50*
6 Months.....\$53.00*
One Year.....\$106.00*

*Price includes Missouri sales tax.

All Subscriptions Payable In Advance

•Delivery problems?

If you didn't receive your paper or it was wet, call 636-239-7701 or 1-888-239-7701.

- Member -

Missouri Press Association
National Newspaper Association
Newspaper Association of America
Inland Newspaper Association



RECYCLABLE



PRINTED ON
RECYCLED PAPER

said he would want recommendations from the selected planners on what would be needed to expand and modernize the parks, including looking at building a small hall for pool parties.

Mayor Steve Myers said the study should also include the planners' recommendations on what a city the size of Pacific should have in its parks system.

Library Programs

Scenic Regional Library Pacific branch has its schedule of programs for the month of July.

All adult programs are free, but registration is required. To register, call 636-257-2712 or go online to the events calendar at scenicregional.org.

Space is limited so reserve your place soon.

Mahjong is played every Monday at 10 am. New players are always welcome.

The Book Club will meet Tuesday, July 9, at 6 p.m. This month's book is "Winter Sisters" by Robin Oliveira.

A stargazing program is planned for Tuesday, July 16, at 7:30 p.m. The St. Louis Astronomical Society and the Eastern Missouri Dark Sky Observers will lead the class.

Weather permitting, the group will move outside after the presentation to use the telescopes for stargazing.

Franklin County's female roller derby team, the Fury, will talk about rules, techniques and strategy of roller derby Thursday, July 18, at 6 p.m. After a short presentation, the group will head outside, weather permitting, for a demonstration of maneuvers.

Author Victoria Cosner will talk about her new book "Missouri's Murderous Matrons" Thursday, July 25, at 6 p.m. Bertha Gifford and Emma Heppermann are just two of the women that Victoria will talk about. Victoria's books will be for sale and she will be available to autograph them.

names of appellants would make people angry.

"I don't want to have people any more ticked off than they already are," Copeland said. "We've had people come into our office somewhat upset and I don't want to stir the pot."

Copeland further added that in many of the cases angry property owners were able to sit down with assessor staff and discuss their

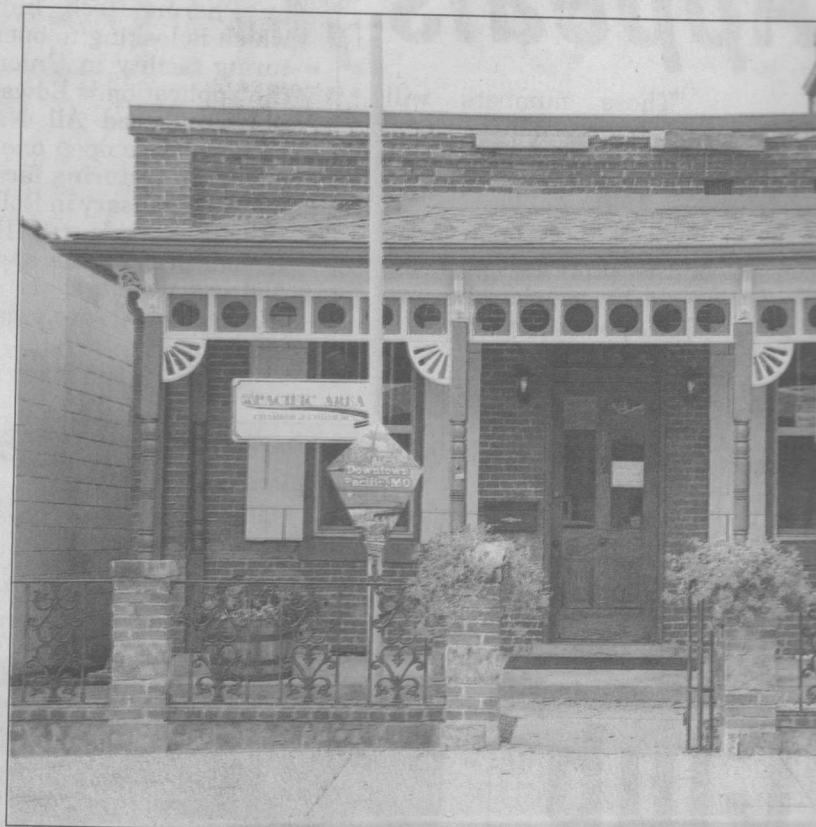
ing and others appeal every cycle on principle.

"It's usually the same people every time," Copeland said. "We had one appeal where the taxes only went up \$5.60."

Increases

Because of the jumps in property taxes this year, the assessor's office was inundated with calls and complaints.

About 45,000 of the



Chamber Welcomes Visitors

The Chamber of Commerce has moved into its office in the historic building at 142 W. St. Louis St. A sign welcoming visitors to downtown Pacific is in front of the renovated building.

Get connected...
Missourian &
emissourian.com

PRIMARY CARE PHYSICIAN NEEDED!

Beautiful wine country and tourist destination in Historic Hermann, Mo.

Outpatient Only. No Call.

Inquire 573-486-2256 or 314-420-3521
Email for details - eschaumberg@hadh.org