



THE Scenic Regional Library NEWSLETTER

read, explore, grow



issue 147 | august 2025

A monthly publication from your local library!

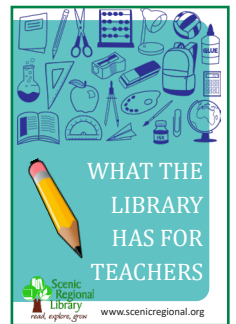
Library Offers Teacher Assistance



Have library materials delivered to your classroom! Teacher assistance requests can be submitted at www.scenicregional.org/teacherform.

Teachers! Have you heard about our Teacher Assistance program? Scenic Regional Library and Washington Public Library have partnered to offer a teachers assistance service to educators in Franklin, Gasconade, and Warren counties. The service allows teachers to submit a request online for their classroom and have library materials delivered to their school. (Teachers can also pick up the materials at the branch nearest their school.)

Teachers can request up to 50 items at a time, including DVDs, CDs, books, and audiobooks. They can request specific titles or materials about a subject, such as "children's books about planets." Educators can also use the service to request materials to assist with lesson planning. The libraries ask that teachers provide at least two weeks to fill a request. The service is available to educators at preschools, daycares, and private and public schools. You can find the teacher assistance request form at scenicregional.org/teacherform.



Brainfuse HelpNow Provides Online Tutoring

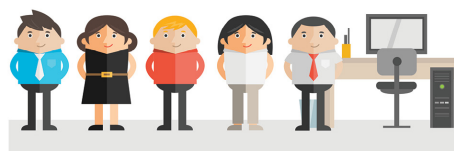


With school right around the corner, remember the library's free online tutoring platform, Brainfuse HelpNow. Brainfuse HelpNow has a user-friendly interface and offers many online learning assistance options, such as live tutoring, a writing lab, the ability to send a question and receive an answer within 24 hours, and much more! Live tutoring is available every day from 2 to 11 p.m. To use or learn more about Brainfuse HelpNow, visit us online at bit.ly/3StrAqz, click "Brainfuse Help Now," and sign in with your library card!

Community Gardens

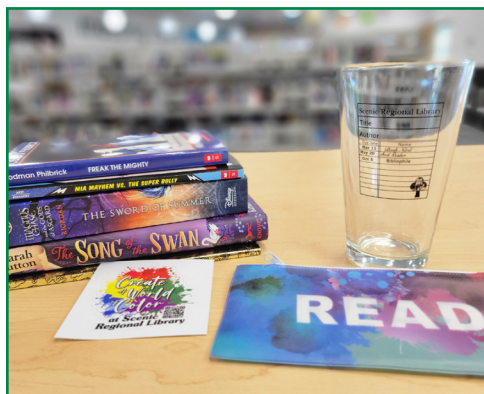


The Community Gardens at the St. Clair (left) and Owensville (bottom) branches are thriving this year, thanks to the hard work of patrons who have checked out beds.



**We will be closed
Monday, September 1
in observance of Labor Day**

A monthly publication from your local library!



Don't forget to turn in your summer reading sheet before August 16th! There are a number of fantastic prizes that you could win.



Elizabeth Kurrus came to the Owensville branch to speak about Beer, Germans, and Methodism. We would all be history lovers with speakers as passionate as Ms. Kurrus!



CHEESE!!!!!! What a delightful day! Our fantastic friends from Wesleyan Kiddie Kollege made use of the Warrenton branch patio during this beautiful weather!

Free Breakfast and Lunch Distribution for Kids at Sullivan Branch



Thank you to Foundations for Strengthening Families for providing food for kids over the summer!

From mid-July to mid-August, Foundations for Strengthening Families, a 501 (c) (3) nonprofit organization based out of St. Louis, visited the Sullivan branch of Scenic Regional Library weekly to distribute free breakfasts and lunches for children for the whole week. Examples of food being provided included pancakes, French toast strips, waffles, chicken, hot dogs, tuna, hamburgers, fruit, vegetables, and milk. Over the course of five weeks, 9,590 meals were distributed to children.

Owensville Receives New Clevertouch

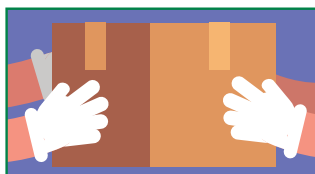


A brand-new 65" Clevertouch has been installed in the Owensville branch's children's area, offering young patrons an upgraded interactive learning experience. The new Clevertouch was generously purchased by the Owensville Friends of the Library group. It replaces the previous model, which was purchased in 2018 and had begun to deteriorate. The device was purchased at a lower cost than the original 55" version and was installed on

Friday, July 25.

The Clevertouch is a large, touch-screen tablet featuring educational apps designed for preschool and elementary-aged children. It encourages hands-on learning through play and exploration. Families are invited to stop by and try it out!

Library Seeks Donations



Scenic Regional Library is always accepting donations of gently-used books, DVDs, music CDs, and books on CD! Most donations will be sold at our semi-annual book sale. Have a lot? Call ahead of time, and we will help you carry them in! Contact your local branch for more details.

A monthly publication from your local library!

Call For Artists - "Bricolage"



After Midnight by Lynnette Watts, displayed during the "Stories" exhibit last winter, is an example of the "Bricolage" style. With this piece, Watts compiled different toys, games, and other found objects into a stunning piece of artwork.

While the Gallery at the Library undergoes repairs, the deadline for our upcoming exhibition, Bricolage, has been extended. This show invites artists to explore the art of transformation—using found objects to create inventive, thought-provoking works. All mediums are welcome, including both wall-hung and stand-alone pieces. (Please note: wall-hung artwork must meet our 2-D display guidelines.)



Bricolage is a French word meaning roughly 'do-it-yourself', and it is applied in an art context to artists who use a diverse range of non-traditional art materials. The deadline for submissions is Saturday, September 13.

For details or to submit your work, please contact the branch manager, Tiffany Richards, at trichards@scenicregional.org or 573-486-2024.

Artists! Submit your art and be part of the show! Fill out the form by visiting bit.ly/3TJK3nK.

Staff August Anniversary

Thank you for being such an *important* piece of our puzzle!



Kristi, Library Assistant, Warrenton



One of our sweet Sullivan patrons taking a break from the heat and working on a puzzle at the Puzzle Station!



Thanks to all that joined us in Union for "Wonderful Reptiles With Sam." We learned so much about reptiles and amphibians.



The Warrenton branch had a line out the door on Thursday, July 31, for driving tests and exams. The Missouri State Highway Patrol has partnered with Scenic Regional Library, and uses the Warrenton branch's meeting room to conduct the testing every 1st, 3rd, and 5th Thursdays of the month, from 9:30 a.m. to noon & 1 to 4 p.m.



A monthly publication from your local library!



Rhonda Scheible and Dana Chapman from the Gasconade County Health Department were happy to accept 100 picture books from the library to distribute to children who come into the health dept. The library has been giving books to the Franklin, Gasconade, and Warren County Health Departments since 2015.

Helping Hands Collection Drive at Owensville Branch



Helping Hands Outreach will have a collection drive at the Owensville branch for the month of September. They will be accepting donations of non-perishable food items, personal care items, and paper products.

The mission of Helping Hands Outreach Center is to provide commodities and emergency food to persons in need and to serve as a clearing house for the Owensville-Rosebud Ministerial Alliance and the Owensville Salvation Army. For more information, visit owensvillefoodpantry.org.

Last Month's Most Popular Titles



1st – *The Housemaid is Watching* by Freida McFadden - From *New York Times*, *USA Today*, and *Wall Street Journal* bestselling author Freida McFadden comes the next installment of the unbelievably twisty, tension-packed, and globally bestselling Housemaid series. This book can be enjoyed as a standalone read, and once you start, it will have you up all night racing through the pages until the final explosive twist.

Genres: Thriller, Mystery, Fiction

2nd – *The Boyfriend* by Freida McFadden - She's looking for the perfect man. He's looking for the perfect victim.

Genres: Thriller, Mystery, Fiction

3rd – *Counting Miracles: A Novel* by Nicholas Sparks - an emotional, powerful novel about wondering if we can change—or even make our peace with—the path we've taken.

Genres: Romance, Contemporary, Fiction

4th – *Funny Story* by Emily Henry - A shimmering, joyful new novel about a pair of opposites with the wrong thing in common.

Genres: Romance, Contemporary, Fiction

Healing Action Network Collection Drive at the Pacific Branch



Healing Action Network's Center for Survivors is a 501(c)3 nonprofit that provides comprehensive, direct services to adult survivors of human trafficking and exploitation in the St. Louis region. The Network has operated since 2015 and provides support to over 700 survivors each year, including those in Franklin County.

They will be collecting personal hygiene products for their Center at the Pacific branch throughout the month of September. The items needed include shampoo, conditioner, deodorant, toothbrushes, toothpaste, hairbrushes, combs, hair ties, menstrual hygiene products, lotion, face wash, lip balm, cosmetic bags, and travel toiletry kits. The items collected will be distributed to the Northeast Children's Advocacy Center, which serves residents of Franklin County.

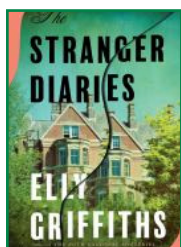


A monthly publication from your local library!

If You Like Freida McFadden... Try These Gripping Psychological Thrillers

Freida McFadden has become a standout favorite among library readers. Since February, she's consistently had a title on our Top Monthly Circulations list, and in July alone, three out of the top four most-borrowed books were hers. Clearly, readers can't get enough of her fast-paced plots, shocking twists, and addictive psychological suspense.

If you've already devoured most of McFadden's works and are hungry for more intense psychological suspense, here are four highly rated read-alikes that will keep you on the edge of your seat. To read one or all of these titles, visit our online catalog at bit.ly/FMReadAlikes.



The Stranger Diaries by Elly Griffiths

This Edgar Award-winning novel blends gothic mystery with modern police procedural. When English teacher Clare

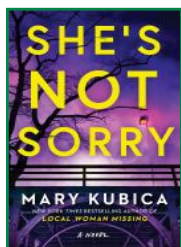
Cassidy's close friend is murdered, Clare's diary begins to reflect knowledge no one else should have. Creepy, clever, and utterly addictive, this is an intelligent literary thriller with a paranormal edge.



The Perfect Nanny by Leïla Slimani

This international bestseller opens with a gut-punch: "The baby is dead." The rest of the novel unpacks how a seemingly perfect

caregiver unraveled into violence. Set in Paris, it's a chilling exploration of class, parenting, and the hidden tensions in domestic life.



She's Not Sorry by Mary Kubica

A chilling page-turner from the bestselling author of *The Good Girl*. When ICU nurse Meghan gets drawn into the life of a young

woman who attempted to jump from a bridge, she begins to suspect the fall wasn't a suicide. The deeper she digs, the more dangerous things become—for both her and her daughter. Fans of McFadden's hospital-set thrillers will feel right at home.



After All I've Done by Mina Hardy

After surviving a car accident and losing chunks of her memory, Diana Sparrow returns home to a life full of secrets—and

suspicions. As she tries to piece together the truth, she discovers her husband and best friend may know more than they're letting on. Full of suspense and psychological twists, this one will keep you guessing until the final pages.



Patrons made their own bottles of real vanilla extract with Madagascar vanilla beans at the Wright City branch.



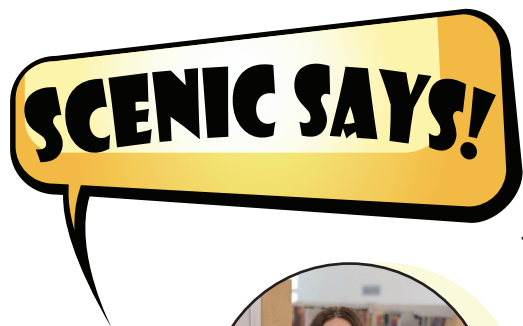
Many thanks to Isaac Cherry and Jerry Rabushka of Cherry & Jerry for leading such a sunny, uplifting evening of art in Pacific!



St. Clair patrons had the most relaxing, creative time bedazzling some of our favorite books last night! Look at these beautiful creations that will be proudly displayed on these patrons' bookshelves!



A monthly publication from your local library!



What's one school supply you always loved picking out?

Is there a book, movie, or TV show that you wish you could experience again for the first time?

What's your favorite spot in the library to relax or read?

Casie
New Haven Branch



"Don't ask me why...but pencil sharpeners and erasers were definitely my top favorites!"

"Little known movie called 'Earth to Echo'. The first time I watched this movie, it really ignited and inspired me to live more fully, document everything, and appreciate those closest to me because you might never know when life will take you in different directions." (Available on DVD and eVideo through Kanopy)

"The patio! Rain, snow, or shine, you can usually find me outside on the patio when I'm not clocked in."

Amanda
Administration



"Art supplies! A new set of fresh crayons or colored pencils is super exciting and full of possibilities!"

"'Jurassic Park'. Seeing the dinosaurs walking for the first time in the theater blew my mind! I still feel the original has some of the best cinematic special effects." (Available on DVD)

"The adult area next to the fireplace is a great, relaxing spot."

Em
Administration



"Folders!! (Lisa Frank designs all the way)"

"There's an anime called 'Violet Evergarden'; I would do literally anything to experience it for the first time again."

"In summer, I like the computers, and in winter definitely the fireplace!"

Genevieve
Sullivan Branch



"Notebooks. I always like the really thick ones, college-ruled ones."

"Probably 'Verity' by Colleen Hoover. That twist at the very end... I'd like to experience that utter shock again, haha."

"Probably on the outdoor patio. It's lovely in the fall, especially to sit out there to do homework or read."



A monthly publication from your local library!

Puzzle Race Fundraiser

The Gasconade County Literacy Council will host a Puzzle Race Fundraiser on Saturday, September 27, at 6 PM, at the Heartland Community Center in Owensville. Each team will race to complete a 500-piece puzzle. All proceeds from the event will go towards the Owensville classroom, directly supporting classroom resources, and will benefit students for years to come.

The event will cost \$10 per person or \$50 per table of 6. For more information and to register, visit ecaliteracy.org/puzzle-races.

Bring your own food, beverages, and table decorations. The event will also feature a silent auction, a 50/50 drawing, prizes for the fastest team, best decorations, and much more.

Additionally, the Gasconade Literacy Council is seeking donations for the event

to be used in the silent auction. Donations can be in the form of gift baskets, gift cards, merchandise, or sponsorship. Donors will have their name or business recognized at the event and in promotional materials as valued community partners. Donations can be dropped off at the Owensville Library. For more information on donations, contact ewoodrome@scenicregional.org or trichards@scenicregional.org.



Turning Point Black Light Bingo Fundraiser



Turning Point Advocacy Services will hold its third annual Black Light Bingo Bash on Saturday, August 23, at the Union City Auditorium in Union. The event is a fundraiser for the new domestic violence safe house opening in Union for Franklin County. All proceeds will go toward the safe house's operating expenses. The event will include a silent auction, a \$100 cash prize for each round of bingo, a 50/50 raffle, a cash bar, other bingo games with cash prizes, and music.

All ages are welcome, but only people 16 or older can play. The tickets include six bingo cards per round, a dauber, and two glow-in-the-dark items. Tickets are \$30 in advance (\$240 for a table of 8) and

can be purchased at www.blacklightticket.com. Contact Steve Campbell at 636-266-1621 for more information. Construction on the safe house is complete, and it is currently being furnished. The house will have eighteen beds for women and their children. It will provide clients with counseling, court advocacy, and other transitional services to help break the cycle of abuse. Turning Point is a 501(c)3 nonprofit that has operated a domestic violence safe house in Warren County since 1994.

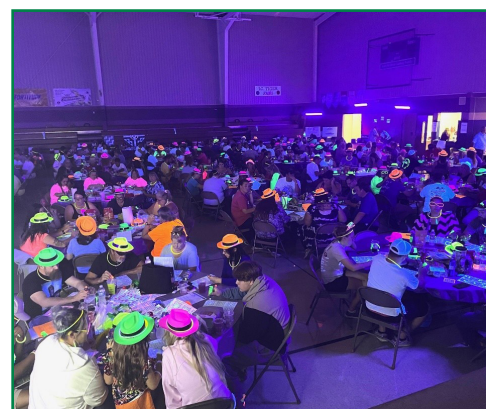


Fostering Franklin Seeking Foster Families



Foster Franklin is seeking families that are interested in fostering, and events and organizations willing to let the

group come and present to give more information. Fostering Franklin is a group of individuals actively involved in the fostering community who provide opportunities to engage passionate community members to support the foster care system through education, advocacy, and promoting strong families. The next training for Missouri Caregiver and Adoption Resource Education (MO C.A.R.E) is September 13, 20, and 27, in-person, in the union area. If interested, please reach out to Taylor or Tara at 636-684-6833 prior to class for the interview process.



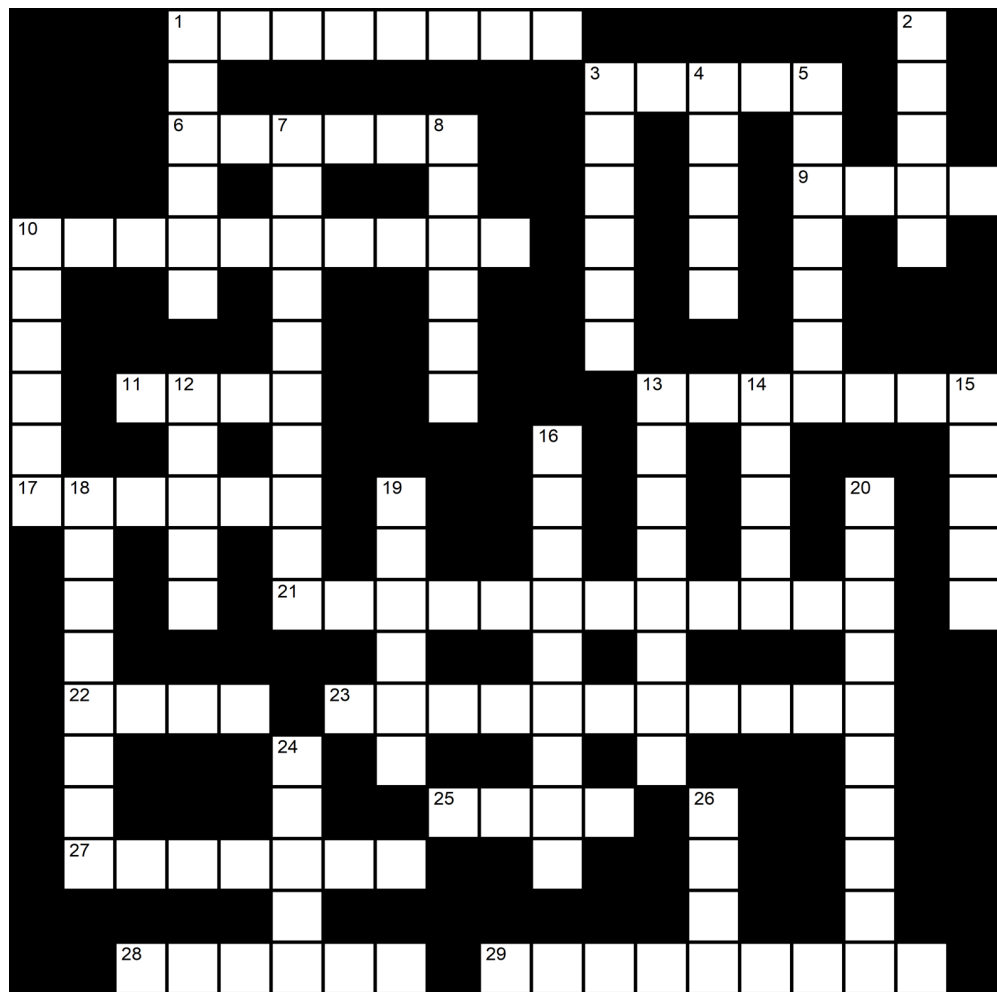
Over 240 people participated in black light bingo to support the new safe house in 2024.

Saturday, August 23, 7 pm
Union City Auditorium, 500 E Locust St.,
Union, MO www.blacklightticket.com.



A monthly publication from your local library!

August Crossword Puzzle



Across

1 Mass of inhabitants in a particular area
3 Related to municipal government duties
6 Distinct geographical area **9** Small municipality, larger than a village
10 Showing intense emotion or enthusiasm **11** Extent of a surface or space **13** Nation with defined borders and government **17** Building for Christian religious worship **21** Voters represented by an elected official **22** Group working together toward common goal **23** Business owned by its members **25** Large urban settlement **27** Study of organisms' relationships with environment **28** Human beings collectively **29** Group living together in one dwelling

Down

1 Administrative district with its own church **2** Large number of persons gathered together **3** Territory controlled by a distant country
4 Pertaining to the human voice **5** Legal member of a state or nation **7** Relating to physical features of Earth **8** Large body of people united by common descent **10** Ordinary people in general **12** Relating to countryside areas **13** Shared by all members of a community
14 Relating to cities and city life **15** Period between childhood and adult age **16** People who live in a particular place **18** Features belonging to culture of a society **19** Community of enthusiasts for entertainment franchise **20** Showing due regard for others **24** Number of people or things together **26** Competitive activity with rules

Find the answers at www.scenicregional.org/crossword.



Purchase a "Book" for the Donor Wall in Your Community's New Library

The Scenic Regional Library Foundation and Friends of the Library groups are selling donor wall "books", which will be placed in the entrance hallway of each new library building.

You can have your name, your family's name, or your business's name become a permanent part of the new library in your community. Donor wall "books" can also serve as a beautiful and long-lasting memorial for a loved one.

The cost of a donor wall "book" is based on the size of the book:

- 8" x 1½" book – \$150
- 10" x 2" book – \$250
- 9" x 3" book – \$350

Visit www.scenicregional.org/foundation/ or complete this form to place your order. The Foundation accepts debit and credit cards (online), checks, and cash (only for forms brought to the library) for donor wall "book" purchases.



Proceeds from the sale of the donor wall books are designated for the local Friends of the Library group and used to assist with the purchase of furnishings and equipment in their new building.

Purchases are tax deductible.



SCENIC REGIONAL LIBRARY
FOUNDATION



Scenic Regional Library Foundation Donor Wall "Book" Order Form

FIRST NAME		DATE	
MIDDLE INITIAL	LAST NAME		
STREET ADDRESS			
CITY			
STATE	ZIP CODE		
PHONE NUMBER			
EMAIL ADDRESS			
NAME OF INDIVIDUAL, FAMILY, BUSINESS OR ORGANIZATION TO APPEAR ON BOOK			
BRANCH (Please select one)		SIZE OF BOOK	
<input type="checkbox"/> Hermann Branch		<input type="checkbox"/> 8" X 1-1/2" - \$150	
<input type="checkbox"/> New Haven Branch		<input type="checkbox"/> 10" X 2" - \$250	
<input type="checkbox"/> Owensville Branch		<input type="checkbox"/> 9" X 3" - \$350	
<input type="checkbox"/> Pacific Branch			
<input type="checkbox"/> St. Clair Branch			
<input type="checkbox"/> Sullivan Branch			
<input type="checkbox"/> Union Branch			
<input type="checkbox"/> Warrenton Branch			
<input type="checkbox"/> Wright City Branch			
OFFICE USE ONLY			
Date received: _____			
Amount received: _____			
<input type="checkbox"/> Check # _____			
<input type="checkbox"/> Cash			

Mail this form (or drop it off at your local branch) with your personal check or money order to:

Friends of the Library
251 Union Plaza Drive
Union, MO 63084




SCENIC REGIONAL LIBRARY

FRIENDS OF THE LIBRARY MEMBERSHIP APPLICATION

October 1, 2025 – September 30, 2026 Membership Year

All information submitted is considered confidential and will never be given or sold to any other individual, company, or organization.

If this membership is for you, please provide your information; if this membership is a gift for someone else, please provide their information:																																	
FIRST NAME		MIDDLE INITIAL																															
LAST NAME																																	
STREET ADDRESS		CITY																															
STATE		ZIP CODE																															
PHONE NUMBER		EMAIL ADDRESS																															
If this membership is a gift for someone else, please provide your information:																																	
FIRST NAME		MIDDLE INITIAL	LAST NAME																														
STREET ADDRESS		EMAIL ADDRESS	PHONE NUMBER																														
BRANCH AFFILIATION (Please select one) <table border="0"> <tr><td>Hermann Branch</td><td><input type="checkbox"/></td></tr> <tr><td>New Haven Branch</td><td><input type="checkbox"/></td></tr> <tr><td>Owensville Branch</td><td><input type="checkbox"/></td></tr> <tr><td>Pacific Branch</td><td><input type="checkbox"/></td></tr> <tr><td>St. Clair Branch</td><td><input type="checkbox"/></td></tr> <tr><td>Sullivan Branch</td><td><input type="checkbox"/></td></tr> <tr><td>Union Branch</td><td><input type="checkbox"/></td></tr> <tr><td>Warrenton Branch</td><td><input type="checkbox"/></td></tr> <tr><td>Wright City Branch</td><td><input type="checkbox"/></td></tr> </table>	Hermann Branch	<input type="checkbox"/>	New Haven Branch	<input type="checkbox"/>	Owensville Branch	<input type="checkbox"/>	Pacific Branch	<input type="checkbox"/>	St. Clair Branch	<input type="checkbox"/>	Sullivan Branch	<input type="checkbox"/>	Union Branch	<input type="checkbox"/>	Warrenton Branch	<input type="checkbox"/>	Wright City Branch	<input type="checkbox"/>	LEVEL OF MEMBERSHIP <table border="0"> <tr><td>Silver - \$25</td><td><input type="checkbox"/></td></tr> <tr><td>Gold - \$50</td><td><input type="checkbox"/></td></tr> <tr><td>Platinum - \$100</td><td><input type="checkbox"/></td></tr> <tr><td>Diamond* - \$500</td><td><input type="checkbox"/></td></tr> <tr><td colspan="2">*Lifetime Membership</td></tr> <tr><td colspan="2">Up to \$10 in book sale volunteer vouchers can be applied toward any level of membership dues.</td></tr> </table>			Silver - \$25	<input type="checkbox"/>	Gold - \$50	<input type="checkbox"/>	Platinum - \$100	<input type="checkbox"/>	Diamond* - \$500	<input type="checkbox"/>	*Lifetime Membership		Up to \$10 in book sale volunteer vouchers can be applied toward any level of membership dues.	
Hermann Branch	<input type="checkbox"/>																																
New Haven Branch	<input type="checkbox"/>																																
Owensville Branch	<input type="checkbox"/>																																
Pacific Branch	<input type="checkbox"/>																																
St. Clair Branch	<input type="checkbox"/>																																
Sullivan Branch	<input type="checkbox"/>																																
Union Branch	<input type="checkbox"/>																																
Warrenton Branch	<input type="checkbox"/>																																
Wright City Branch	<input type="checkbox"/>																																
Silver - \$25	<input type="checkbox"/>																																
Gold - \$50	<input type="checkbox"/>																																
Platinum - \$100	<input type="checkbox"/>																																
Diamond* - \$500	<input type="checkbox"/>																																
*Lifetime Membership																																	
Up to \$10 in book sale volunteer vouchers can be applied toward any level of membership dues.																																	
MEMBERSHIP GIFTS <div style="display: flex; justify-content: space-around; align-items: center;">    </div> <table border="0" style="width: 100%;"> <tr> <td style="text-align: center;"><u>Gold:</u> 12oz. metal tumbler/ Koozie</td> <td style="text-align: center;"><u>Platinum:</u> bluetooth speaker/ wireless phone charger</td> <td style="text-align: center;"><u>Diamond:</u> \$150 donor wall book</td> </tr> </table>				<u>Gold:</u> 12oz. metal tumbler/ Koozie	<u>Platinum:</u> bluetooth speaker/ wireless phone charger	<u>Diamond:</u> \$150 donor wall book																											
<u>Gold:</u> 12oz. metal tumbler/ Koozie	<u>Platinum:</u> bluetooth speaker/ wireless phone charger	<u>Diamond:</u> \$150 donor wall book																															
WOULD YOU LIKE TO HELP? (Select all which apply) <table border="0"> <tr><td>Volunteer at the Fall Book Sale</td><td><input type="checkbox"/></td></tr> <tr><td>Volunteer at the Spring Book Sale</td><td><input type="checkbox"/></td></tr> <tr><td>Volunteer at other events</td><td><input type="checkbox"/></td></tr> <tr><td>Volunteer at my local branch</td><td><input type="checkbox"/></td></tr> <tr><td>Serve on the local Friends of the Library's Governing and Planning Committee</td><td><input type="checkbox"/></td></tr> </table>		Volunteer at the Fall Book Sale	<input type="checkbox"/>	Volunteer at the Spring Book Sale	<input type="checkbox"/>	Volunteer at other events	<input type="checkbox"/>	Volunteer at my local branch	<input type="checkbox"/>	Serve on the local Friends of the Library's Governing and Planning Committee	<input type="checkbox"/>	OFFICE USE ONLY <table border="0"> <tr><td><input type="checkbox"/></td><td>New Application</td></tr> <tr><td><input type="checkbox"/></td><td>Renewal</td></tr> <tr><td><input type="checkbox"/></td><td>Date Received:</td></tr> <tr><td><input type="checkbox"/></td><td>Check # _____ <input type="checkbox"/> Cash</td></tr> <tr><td><input type="checkbox"/></td><td>Amount Received:</td></tr> </table>		<input type="checkbox"/>	New Application	<input type="checkbox"/>	Renewal	<input type="checkbox"/>	Date Received:	<input type="checkbox"/>	Check # _____ <input type="checkbox"/> Cash	<input type="checkbox"/>	Amount Received:										
Volunteer at the Fall Book Sale	<input type="checkbox"/>																																
Volunteer at the Spring Book Sale	<input type="checkbox"/>																																
Volunteer at other events	<input type="checkbox"/>																																
Volunteer at my local branch	<input type="checkbox"/>																																
Serve on the local Friends of the Library's Governing and Planning Committee	<input type="checkbox"/>																																
<input type="checkbox"/>	New Application																																
<input type="checkbox"/>	Renewal																																
<input type="checkbox"/>	Date Received:																																
<input type="checkbox"/>	Check # _____ <input type="checkbox"/> Cash																																
<input type="checkbox"/>	Amount Received:																																

Mail this form (or drop it off at your local branch) with your personal check or money order to:
 Friends of the Library, 251 Union Plaza Dr., Union, MO 63084
Membership dues and contributions are tax deductible.