



THE Scenic Regional Library NEWSLETTER

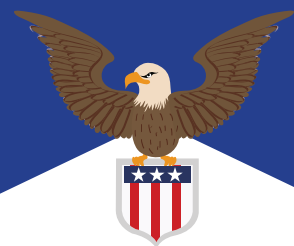
read, explore, grow



issue 93 | february 2021

A monthly publication from your local library!

Scenic Regional
Library branches will
be closed Monday,
February 15,
in observance of
Presidents' Day!



The Library's Digital Magazines Have Moved!

The library's
digital magazines (also
called e-magazines)
have been moved from
RBDigital to Overdrive.

Overdrive recently purchased RBDigital
and made the move on January 28. The
library's digital magazines can now be
found through Libby, the free Overdrive
mobile app.

The library offers over 3,500 popular
magazine titles, along with up to three
years of back issues. Patrons can
download the magazines onto mobile
devices such as tablets, smartphones, and
some eReaders, and keep them forever.
However, they can only be streamed on a
desktop computer or laptop.



Library Adds Online Instructional Videos for Crafts

The library added Creativebug
to its collection of digital resources
on February 1. Creativebug provides
on-demand access to over 1,000 high-
definition arts and crafts instructional videos for kids, teens, and adults. Subjects include
drawing, painting, sewing, knitting, crochet, quilting, baking, and more. All classes are
taught by experts, with new classes added daily.

Creativebug video tutorials are broken down into small video segments that guide a
user through the process step-by-step. Each class also includes a detailed list of needed
materials and a place to take notes as you go. Creativebug provides access to thousands
of classes and downloadable patterns, templates and recipes, and even allows users to
communicate with instructors and each other.

Creativebug has a mobile app available for iOS and Android.

creativebug®

Check Out the Library's New Streaming Video Service

On February 1, the library added
Kanopy to its collection of digital
resources. Kanopy is an on-demand
streaming service with a collection of more
than 30,000 films, including feature films,
independent films, documentaries, foreign
language films, kids' movies, kids' TV
shows, classes from sources like the Great
Courses, and training videos.

Kanopy Kids includes the Sesame Street
catalog and animated versions of popular
storybooks. Over 60% of the content is
only available on Kanopy. Kanopy adds
300-500 newly-released films every month.
Films can be streamed from any computer,
television, mobile device, or platform by
downloading the Kanopy app (iOS or
Android), AppleTV, Chromecast, or Roku.

The library also has streaming video
available through Hoopla.

kanopy

THOUGHTFUL ENTERTAINMENT





read, explore, grow

THE

Scenic Regional Library NEWSLETTER

A monthly publication from your local library!

Chilton Library

Do you repair or perform maintenance on your own vehicles? If so, you need to check out Chilton Library. If you've done a lot of car repairs and maintenance, you've probably used a Chilton manual. The library's online Chilton Library provides everything you can find in a Chilton manual, plus a whole lot more. You can find repair, maintenance and service information for thousands of car, truck, van, and SUV makes and models. In addition, Chilton Library provides step-by-step repair procedures, troubleshooting guides, diagnostic trouble codes, photographs, illustrations, wiring diagrams, and multimedia (videos and animations) to simplify even the most complicated tasks.

Chilton Library can be accessed 24/7 on the library's website with a library card: <https://scenicregional.org/databases/#diy>. You can also easily print whatever you need from the site.



Staff Spotlight: Erica, Administrative Assistant, Administration



How long have you worked for Scenic?
A little over a year.

Have you held any other positions at Scenic? If yes, which positions, and for how long? Yes. I was a Library Assistant at the Union branch for just a few months before becoming the Administrative Assistant.

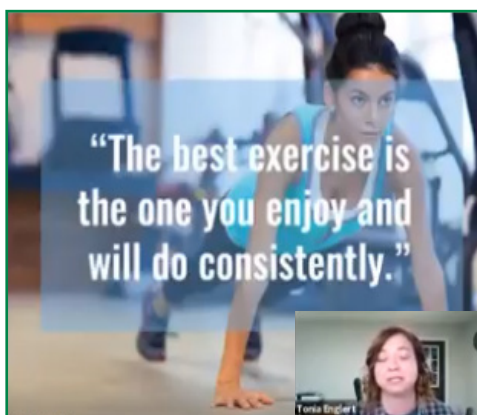
What made you want to work in a library? I wanted to spend my eight-hour workday doing something I felt truly mattered. I get a lot of satisfaction working behind the scenes, knowing I'm contributing to the daily functions of a library so many people depend on and

enjoy. (Getting to run out to the stacks on my break is a pretty good perk, too.)

What do you wish more people knew about the library? If you don't see it on the shelf, don't assume we don't have it! Through our Evergreen resources, we have the largest library collection in the state of Missouri. Even if what you're looking for is a little obscure, we can probably get it for you through interlibrary loan.

What are you currently reading or what are you reading next? I just finished *Fifth Business* by Robertson Davies. My to-read pile is kind of a mess right now. It includes *The Hollow Places* by T. Kingfisher, *Shadowland* by Peter Straub, and *Surviving Death* by Leslie Kean. I have to have lots of options on hand because I never know what I'm going to be in the mood for.

What is your favorite book? Why? *Jane Eyre*, by Charlotte Brontë. I first read it when I was thirteen, and have reread it many times since. I'm not sure why I feel such a strong bond with the protagonist, but I do, and I never get tired of the story.



Tonia Englert presented a virtual program "New Year, New You" to our patrons; giving tips for a healthier 2021.



We have some Winter Reading BINGO winners that completed their BINGO cards!

SCENIC REGIONAL LIBRARY

LIKE US! GO TO FACEBOOK.COM | VISIT US AT SCENICREGIONAL.ORG



read, explore, grow

THE

Scenic Regional Library NEWSLETTER



St. Clair Branch's Community Garden Set to Open in March

The St. Clair branch's Community Garden is set to officially open this spring. The garden, which is located behind the branch, features fourteen 4' by 8' raised beds for vegetables and eight smaller beds for flowers and herbs. Individuals, organizations, and classrooms can "check out" a raised bed with a library card for a growing season.

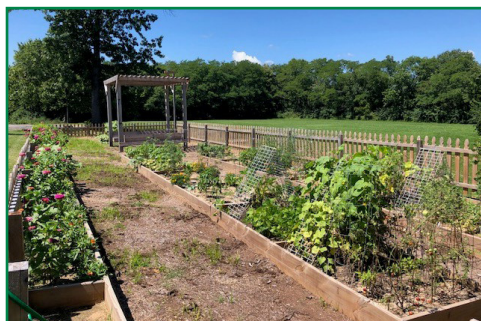
People interested in "checking out" a raised bed in 2021 must attend an informational Zoom meeting on Saturday, February 27, at 2:00 PM.

In the spring of 2016, the St. Clair Farmer's Market expressed interest in the creation of a community garden. The library was in search of ideas for creating unique public spaces at their new facilities and thought that the community garden was a great fit for the branch.

In the summer of 2016, the First Baptist Church and United Methodist Church in St. Clair each donated a small tract of land (one-tenth of an acre) to the library for the purpose of constructing a community garden. The new St. Clair branch, which was renovated and expanded, opened in August 2018.

In 2019, the St. Clair branch Friends of the Library agreed to take on the project. Paula Dace, a member of the St. Clair branch Friends of the Library's governing committee and a Master Gardener, directed construction of the garden and provided many hours of volunteer labor. Local landscaper Cozy Bailey, who owns Cozy by Nature, and her mother, Master Gardener Carolyn Cikovic, also volunteered their time to help create the garden. Bill Snow, the library's Facilities Manager, constructed the beds, installed the fencing, and is in the process of building a pergola and bench in the garden. In addition to paying for the lumber, the Friends group covered the cost of the mulch, liners, topsoil, and a motion-activated spotlight.

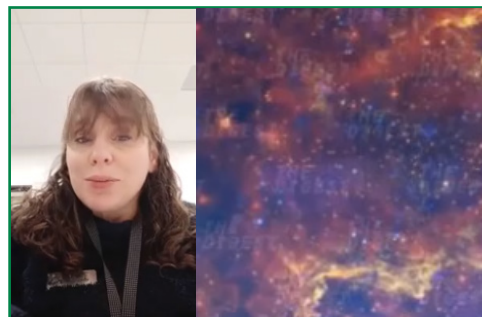
The garden was expected to open in spring 2020, but the launch was canceled due to COVID.



Interested in "checking out" a raised bed in 2021?

Informational Meeting on Zoom*
Saturday, February 27, at 2:00 PM

Call St. Clair Branch Manager Kara Bell at 636-629-2546 for the meeting call-in information. *You can also just call into the meeting.



Melody from New Haven is offering virtual guided meditation sessions on the 2nd and 4th Fridays of the month.



One of our Virtual Storytimes focused on famous painters such as Van Gogh and Picasso and then we painted together.



Several branches are now offering Bedtime Storytimes for our little patrons to enjoy. Refer to pg. 6 for dates/times/branches that are participating.



read, explore, grow

THE

Scenic Regional Library NEWSLETTER



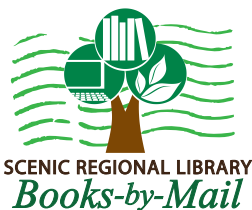
A monthly publication from your local library!

Library Sees Increase in Books-by-Mail Usage in 2020

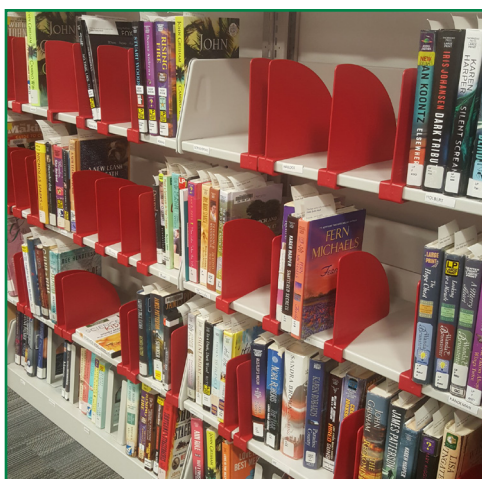
The library has offered books-by-mail to homebound residents throughout its three-county district since 2015. Homebound individuals who qualify for the free service sign up to receive five items at a time through the library by mail, including books, audiobooks on CD, music on CD, and even DVDs.

For the past few years, the library has regularly served about 100 homebound patrons. However, over the past year, the number has increased to 118—an 18% increase. The noticeable increase is most likely due to COVID.

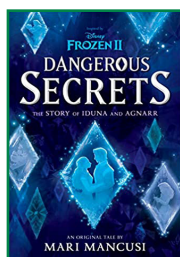
If you or someone you know is homebound and unable to visit the library, and interested in signing up for books-by-mail, visit www.scenicregional.org/request-materials/booksbymail for more information and to sign up. If the person who is needing the service does not have Internet access, they can call Laurie Osseck at 636-583-0652, extension 114, to sign up.



SCENIC REGIONAL LIBRARY
Books-by-Mail



Staff Picks

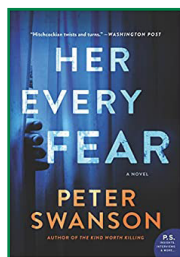


“Frozen 2: Dangerous Secrets: The Story of Iduna and Agnarr” by Mari Mancusi

This Young Adult Novel is a wonderful look into not only Elsa and Anna’s parents’ past but the history of the Northuldra people and the Arendellians. Although Iduna is Northuldra she must keep this a secret, even from Prince Agnarr. The Arendellians fear Northuldra even though they are stuck behind the impenetrable mist in the Enchanted Forest. As we follow Iduna and Agnarr through their lives, Agnarr becomes a King while Iduna is inventing and helping the people of Arendelle. We are also taken in by their secret love story. Agnarr as King needs to marry another royal but will their love still survive this? What about the people attacking the city as well?

I was always intrigued by Elsa and Anna’s parents in the movies and although we know of their fate this was an amazing love story. This book flips back and forth between Iduna and Agnarr’s perspective which is something I enjoy in a love story. But don’t worry there is some good action in there as well. Any true Frozen fan will see how ripe it is with plenty of Easter eggs from the movies. It was very refreshing to see how Iduna is an inventor and very much a strong female character as well as Agnarr, who is very understanding and supportive. If you want to delve even further into the world of Frozen and learn more I suggest this read.

-Review by Kaleigh, Wright City branch



“Her Every Fear” by Peter Swanson

Katy Priddy lives in London in a small apartment. Her latest relationship ended under not-so-pleasant circumstances and has left Katy debilitated with anxiety, agoraphobia, and panic attacks. One day her wealthy cousin, Corbin, offers to swap apartments with her for six months. She lives in his apartment in Boston and he lives in her apartment in London. When she arrives, she finds a lavishly decorated and expensive apartment. She also finds out a single woman next door had been murdered. Katy finds all sorts of interesting residents in her new apartment building while she struggles to sort out whether her cousin was involved in the murder while struggling to control her anxiety.

I enjoyed this book very much. It was suspenseful in an Alfred Hitchcockian way. The story switches back and forth in point of view between characters which I found enjoyable in this book. Ultimately, I finished this book in about two days which is a new personal record for me! I couldn’t turn the pages fast enough. The last few chapters just really grab you with the turn of the story. Pick up this book and give it a read if you are into psychological thrillers

-Review by Renny, Wright City branch

SCENIC REGIONAL LIBRARY

LIKE US! GO TO FACEBOOK.COM | VISIT US AT SCENICREGIONAL.ORG



read, explore, grow

THE

Scenic Regional Library NEWSLETTER

A monthly publication from your local library!

East Central Adult Education & Literacy Hiring

East Central College Adult Education & Literacy has an opening for a part-time Coordinator responsible for providing program support to the AEL program. The coordinator will be primarily responsible for training and coordinating volunteer tutors. The coordinator also serves as a case manager for literacy students.

Hours are 9-12 am or 5-8 pm, alternating days Monday through Thursday. This is a grant funded position limited to no more than 17 hours per week and may average just 10-12 hours per week. Reliable transportation and flexible hours both morning and evening required.

There are currently three part-time teaching positions open:

English Language Acquisition Instructor openings and locations:

- Washington: Mercy Clinic South:
Mondays and Wednesdays, 8:00 am - 11:00 am, year-round

College and Career Readiness Instructor openings and locations:

- Owensville-First Baptist Church:
Tuesdays and Thursdays, 5:00 pm - 8:00 pm, year-round
- Sullivan-The Ridge Church:
Mondays and Thursdays, 5:00 pm - 8:00 pm, year round

Minimum Qualifications:

Completion of a B.S. or B.A. degree

- Fingerprint background check required
- Teaching or tutoring experience preferred.

Starting salary for each position is \$17.00 per hour.

Visit www.eastcentral.edu/ael for more information, class times and locations.



Brett Barnes of Mark Twain State Park virtually presented a program for our inaugural Show-case on Missouri State Parks.



Patrons had the opportunity to watch how to make easy no-bake granola bars with just a few simple ingredients.



Patrons learned more about the hygge lifestyle from Denmark's own, Sine Hansen Glud.



The New Haven branch had a display of various hobbies and crafts to celebrate National Hobby Month.



The library hosted their annual "Return to Hogwarts" via Zoom for Harry Potter fans.

SCENIC REGIONAL LIBRARY

LIKE US! GO TO FACEBOOK.COM | VISIT US AT SCENICREGIONAL.ORG



read, explore, grow

THE

Scenic Regional Library NEWSLETTER



February 2021 Program Guide: All Branches

WINTER READING PROGRAM

BOOK BINGO

January 2 - March 1

Sign up for the Winter Reading BINGO at READSquared, pick up a BINGO card at your local branch of Scenic Regional Library, or download a BINGO card at home.
#SRLwinterbingo

VIRTUAL ADULT PROGRAMS

Virtual Valentine Candy Bouquet

Thursday, February 4 at 5:00 pm

Virtual Presidential Love Letters

Thursday, February 11 at 5:00 pm

Virtual Meditation with Melody

February 12 & 26 at 10:00 am

Virtual Painting with a Twist:

Horses, Llamas, & Chickens, Oh My!

Thursday, February 18 at 5:00 pm

Virtual Show-Me State Parks & Historic Sites

Third Friday each Month at 1:00 pm

Virtual Take & Make:

Ceramic Pot Gnomes

Thursday, February 26 at 5:00 pm

VIRTUAL KID & TEEN PROGRAMS

Kids Club - Every Monday at 4pm

2/1: Cootie Catchers

2/8: Mardi Gras Masks

2/15: Let Love Grow

2/22: Among Us Crafts

Teen Programs

1st Wednesday of Month at 4pm

February 3-Virtual Mindfulness for Teens.

VIRTUAL BOOK CLUBS

Warrenton branch

Thursday, February 4 at 5:30 pm

The Light We Lost

by Jill Santopolo.

Hermann branch

Wednesday, February 17 at 4:30 pm

The Street by Ann Petry.

Union branch

Thursday, February 18 at 6:00 pm

The One-in-a-Million Boy

by Monica Wood.

St. Clair branch

Friday, February 19 at 6:00 pm

The Rosie Project

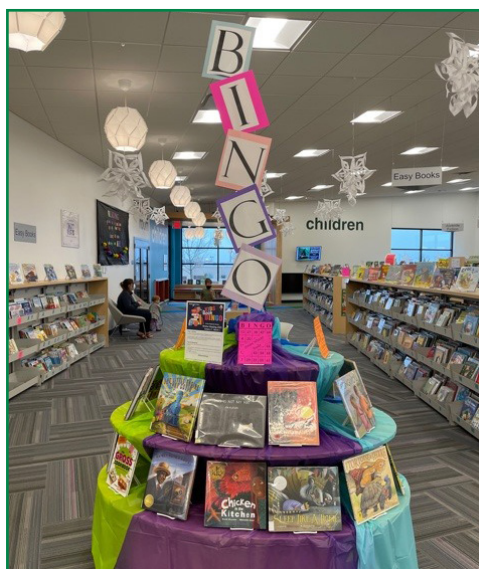
by Graeme Simsion.

New Haven branch

Wednesday, February 24 at 5:00 pm

A Country Year: Living the Questions

by Sue Hubbell.



Several branches currently have book displays featuring books that will qualify for a Bingo square for our Winter Reading Program.

VIRTUAL STORYTIMES

Herman branch

Tuesdays at 10:00 am

Last Monday of month at 7:00pm

New Haven branch

Tuesdays at 10:00 am

3rd Saturday of month at 10:00am

Owensville branch

Wednesdays at 10:00 am

Pacific branch

Thursdays at 10:00 am

Mondays at 7:30pm

St. Clair branch

Thursdays at 11:00 am

Sullivan branch

Tuesdays at 10:00 am

Union branch

Wednesdays at 10:00 am

Tuesdays at 7:00pm

Warrenton branch

Tuesdays at 10:00 am

1st Saturday of month at 10:00am

Wright City branch

Wednesdays at 10:00 am

Thursdays at 6:00pm



We asked patrons to help us celebrate National Library Shelfie Day on January 28 by posting a "shelfie" on our Facebook pages.

SCENIC REGIONAL LIBRARY

LIKE US! GO TO FACEBOOK.COM | VISIT US AT SCENICREGIONAL.ORG



Purchase a "Book" for the Donor Wall in Your Community's New Library

The Scenic Regional Library Foundation and Friends of the Library groups are selling donor wall "books", which will be placed in the entrance hallway of each new library building.

You can have your name, your family's name, or your business's name become a permanent part of the new library in your community. Donor wall "books" can also serve as a beautiful and long-lasting memorial for a loved one.

The cost of a donor wall "book" is based on the size of the book:

- 8" x 1½" book – \$100
- 10" x 2" book – \$200
- 9" x 3" book – \$300

Visit www.scenicregionallibraryfoundation.org or complete this form to place your order. The Foundation accepts debit and credit cards (online), checks, and cash (only for forms brought to the library) for donor wall "book" purchases.

Proceeds from the sale of the donor wall books are designated for the local Friends of the Library group and used to assist with the purchase of furnishings and equipment in their new building.

Purchases are tax deductible.

Donor wall "books" can be purchased throughout the construction project and will be unveiled at the grand opening of each new branch library.



Scenic Regional Library Foundation Donor Wall "Book" Order Form

FIRST NAME		DATE	
MIDDLE INITIAL	LAST NAME		
STREET ADDRESS			
CITY			
STATE	ZIP CODE		
PHONE NUMBER			
EMAIL ADDRESS			
NAME OF INDIVIDUAL, FAMILY, BUSINESS OR ORGANIZATION TO APPEAR ON BOOK			
BRANCH (Please select one)		SIZE OF BOOK	
<input type="checkbox"/> Hermann Branch		<input type="checkbox"/> 8" X 1-1/2" - \$100	
<input type="checkbox"/> New Haven Branch		<input type="checkbox"/> 10" X 2" - \$200	
<input type="checkbox"/> Owensville Branch		<input type="checkbox"/> 9" X 3" - \$300	
<input type="checkbox"/> Pacific Branch			
<input type="checkbox"/> St. Clair Branch			
<input type="checkbox"/> Sullivan Branch			
<input type="checkbox"/> Union Branch			
<input type="checkbox"/> Warrenton Branch			
<input type="checkbox"/> Wright City Branch			
OFFICE USE ONLY			
Date received: _____			
Amount received: _____			
<input type="checkbox"/> Check # _____			
<input type="checkbox"/> Cash			

Mail this form (or drop it off at your local branch) with your personal check or money order to:

Friends of the Library
251 Union Plaza Dr.
Union, MO 63084



SCENIC REGIONAL LIBRARY FRIENDS OF THE LIBRARY MEMBERSHIP APPLICATION

April 1, 2021 – March 31, 2022 Membership Year

All information submitted is considered confidential and will never be given or sold to any other individual, company, or organization.

If this membership is for you, please provide your information; if this membership is a gift for someone else, please provide their information:		
FIRST NAME		MIDDLE INITIAL
LAST NAME		
STREET ADDRESS		CITY
STATE		ZIP CODE
PHONE NUMBER		EMAIL ADDRESS
If this membership is a gift for someone else, please provide your information:		
FIRST NAME	MIDDLE INITIAL	LAST NAME
PHONE NUMBER		EMAIL ADDRESS
BRANCH AFFILIATION (Please select one) Friends of the Hermann Branch <input type="checkbox"/> Friends of the New Haven Branch <input type="checkbox"/> Friends of the Owensville Branch <input type="checkbox"/> Friends of the Pacific Branch <input type="checkbox"/> Friends of the St. Clair Branch <input type="checkbox"/> Friends of the Sullivan Branch <input type="checkbox"/> Friends of the Union Branch <input type="checkbox"/> Friends of the Warrenton Branch <input type="checkbox"/> Friends of the Wright City Branch <input type="checkbox"/>		LEVEL OF MEMBERSHIP Bronze – \$10 <input type="checkbox"/> Silver – \$25 <input type="checkbox"/> Ruby – \$50 <input type="checkbox"/> Gold – \$100 <input type="checkbox"/> Platinum – \$250 <input type="checkbox"/> Diamond* – \$500 <input type="checkbox"/> *Lifetime Membership
WOULD YOU LIKE TO HELP? (Select all which apply) Volunteer at the Fall Book Sale <input type="checkbox"/> Volunteer at the Spring Book Sale <input type="checkbox"/> Volunteer at other events <input type="checkbox"/> Volunteer at my local branch <input type="checkbox"/> Serve on the local Friends of the Library's Governing and Planning Committee <input type="checkbox"/>		Office Use Only <input type="checkbox"/> New Application <input type="checkbox"/> Renewal Date Received: <input type="checkbox"/> Check # _____ <input type="checkbox"/> Cash Amount Received:

Mail this form (or drop it off at your local branch) with your personal check or money order to:
Friends of the Library, 251 Union Plaza Dr., Union, MO 63084
Membership dues and contributions are tax deductible.